

MCDS

MULTI ORGANIZATIONAL
COLLABORATIVE
DISTRIBUTED DECISION
SUPPORT SYSTEM

AGNIK, LLC

Ubiquitous Intelligence from Data

MCDS is a multi-organizational and multi-cultural collaborative decision support system to deal with emergencies. It is specifically designed for applications in the areas of emergency preparedness, counter-terrorism, and homeland defense. MCDS provides a kernel for managing and analyzing distributed un/semi-structured and stream data, integrating psychological /social models, integrating modules for simulation, geographical information systems, wireless network-based devices for real-time mobile resource discovery, and risk-assessment modules for collaborative decision making.

Feature Highlights:

Distributed Agent-based Architecture:

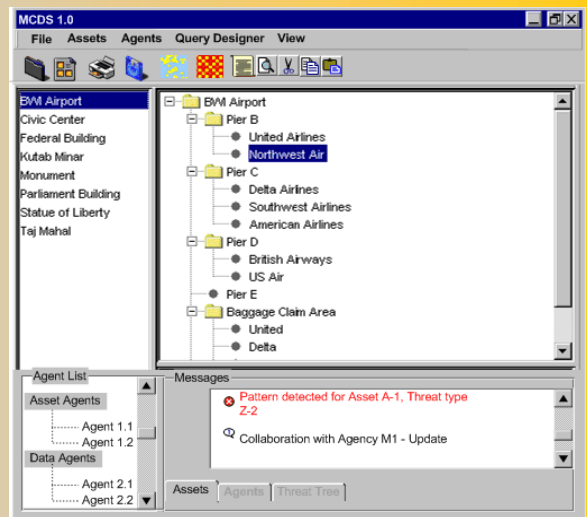
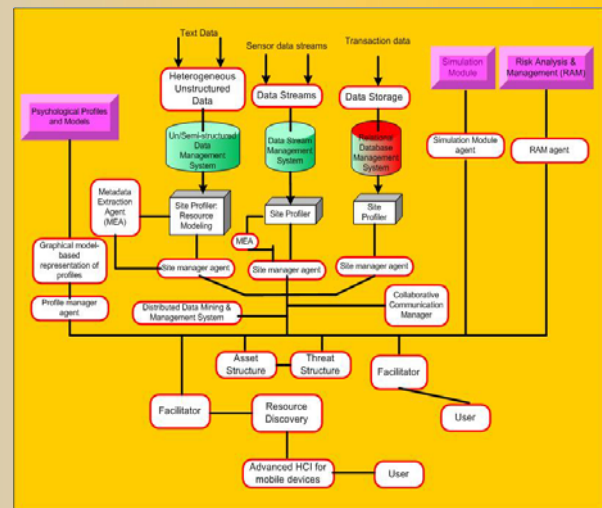
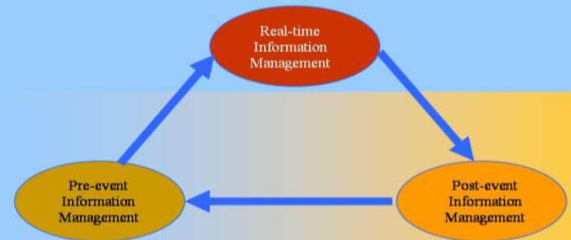
MCDS is a multi-agent system that works around the threat structure for an asset/mission that needs to be defended.

- Distributed management of threat and asset/mission structures.
- Distributed collaborative problem solving.

Distributed Un/Semi/Stream structured Data Management and Mining:

MCDS is designed to handle a diverse collection of data sources like structured data streams, un/semi-structured data, and relational data.

- Link analysis for detecting hidden structures and associations.
- Distributed data mining.



MCDS

MULTI ORGANIZATIONAL
COLLABORATIVE
DISTRIBUTED DECISION
SUPPORT SYSTEM

AGNIK, LLC

Ubiquitous Intelligence from Data

Feature Highlights:

Integrated Distributed Security/Privacy Management:

MCDS pays careful attention to data privacy and security issues.

- Modular access to the system based on security portfolio of the user.
- Privacy-preserving data mining.

Collaborative Decision Making:

MCDS offers a wide collection of functionalities to support collaborative problem solving:

- Collaboration agent-based interaction that suggests opportunities for collaboration.
- Analysis of individual goals, rationales, and methodologies using a graphical interface.

Psychological and Social Link Structure Analysis:

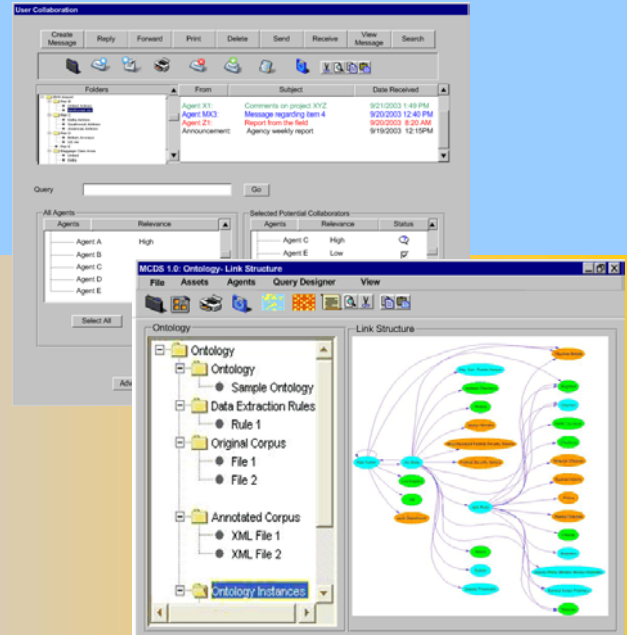
MCDS supports fusion and mining of the diverse information sources guided by appropriate psychological models. It allows integration of third party developed models and their use to detect emerging **social/psychological link structures**.

Real-time Resource Discovery and data collection using Handheld Devices:

The mobile interface of MCDS allows real-time resource discovery and collection of important data.

Integrating GIS and Simulation Modules:

MCDS allows presenting information using standard Geographical Information Systems (GIS). It also allows integrating simulation modules.



For more information, contact Agnik, LLC or visit our web site at www.agnik.com

This project is supported by the United States Air Force SBIR Grant

AGNIK, LLC

8840 Stanford Blvd. Ste 1300
Columbia, MD 21045

Phone: 410-290-0146

Fax: 815-550-2325

Email: info@agnik.com